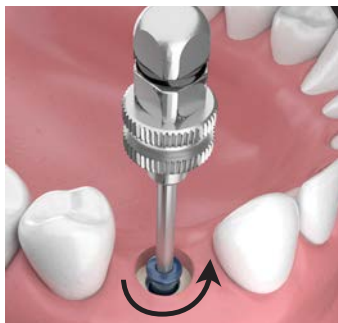


## CLOSED TRAY **IMPRESSIONS**



**1** Remove tissue over the implant using a tissue punch or surgical blade.



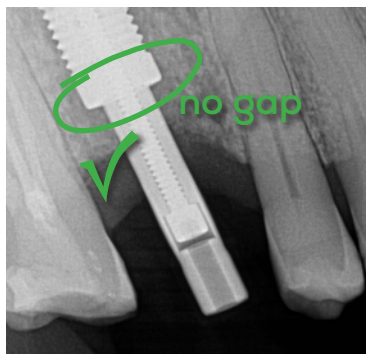
**2** Remove cover screw with the .050 hex tool.



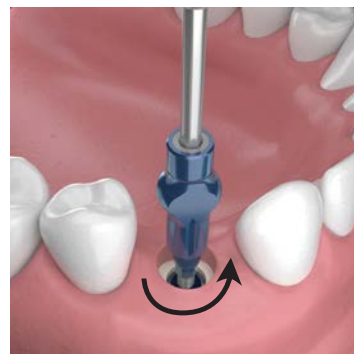
**3** Use the Bone Profiler Kit to remove excess bone and tissue that has grown over the top of the implant.



**4** Align the appropriate series impression post into the implant. The impression post has a hex on the bottom which will fit into the internal hex in the implant. Finger tighten with .050 hex tool.

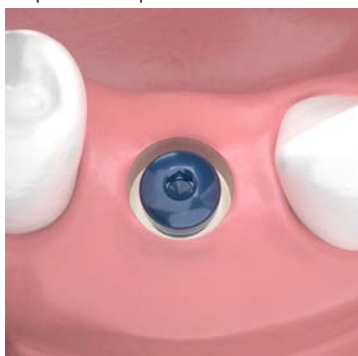


**5** X-ray to verify proper seating of the impression post. There should be no gap between the implant and the impression post.



**6** After impression is complete, use the .050 Hex Driver to turn the screw counter clockwise to remove the impression post from the implant. Send impression and impression post to the laboratory.

If you decide to place the impression post back in the impression, attach an analog, or let the laboratory do that step.



**7** Place a healing cap or temporary abutment with restoration on the implant while final restoration is being fabricated.

*Products illustrated in this procedure:  
 IPC-0300-00 closed tray impression post,  
 HCS-0330-00 healing cap, IR3-3508-CL implant,  
 HDT-0050-00 hex driver*