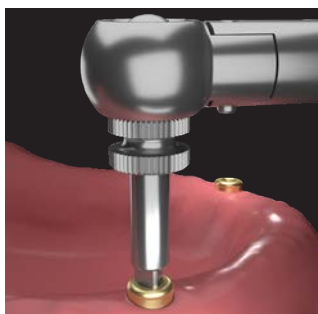


## PLACEMENT OF LOCATOR® DENTURE RETAINING ABUTMENT

LOCATOR® Abutments are used to secure removable denture prosthetics.

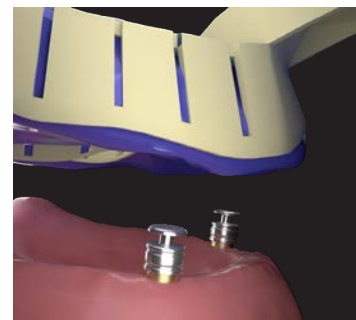


**1** Take an implant level impression using standard impression posts. Send impression to the laboratory for them to pick the correct abutments and make a customized tray.



**2** APPT 2: When case is returned from the laboratory, remove healing caps, insert abutments, and drive them into the implants using the DLR-0345-00 LOCATOR® Driver and a torque wrench.

*Torque specifications:  
 300 Series: 20 Ncm  
 400 & 500 Series: 30Ncm*



**3** Using the custom tray, take a second impression with the appropriate impression copings over the abutment. Send impression to the laboratory for master cast, base plate and wax rims for jaw relations.

**4** APPT 3: When case is returned from the laboratory use the base plate and wax rims to register jaw relations. Send to laboratory.



**5** APPT 4: When case is returned from the laboratory, try in denture setup. Make adjustments as necessary before processing final restoration.

**6** APPT 5: When final denture is returned, insert appliance, adjust occlusion, retention caps and denture base as necessary.