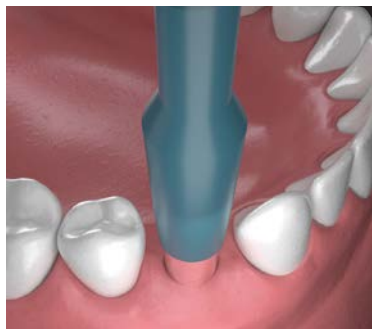
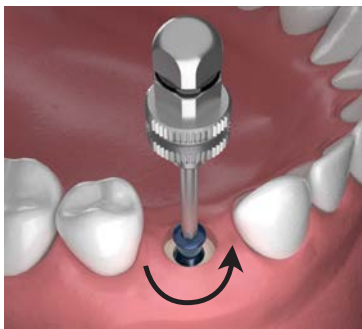


**4a - OPEN TRAY IMPRESSIONS**



**4a.1** Remove tissue over the implant using a tissue punch or surgical blade.



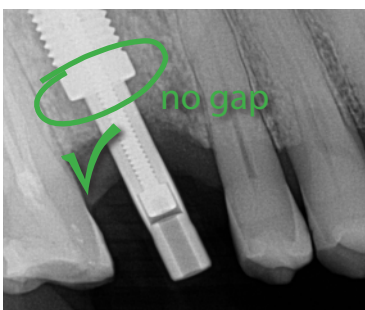
**4a.2** Remove cover screw with the .050 Hex Driver.



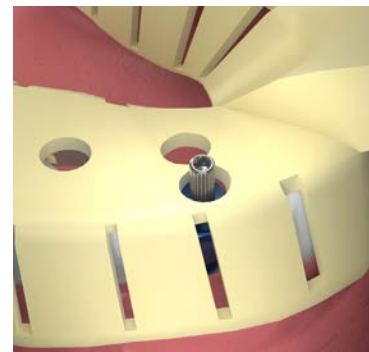
**4a.3** Use the Bone Profiler Kit to remove excess bone and tissue that has grown over the top of the implant. See page 47.



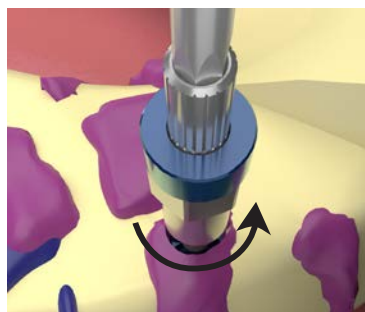
**4a.4** Align the appropriate series impression post into the implant. The impression post has a hex on the bottom which will fit into the internal hex in the implant. Finger tighten with .050 hex tool.



**4a.5** X-ray to verify proper seating of the impression post. There should be no gap between the implant and the impression post.



**4a.6** Customize the open tray so the impression post sticks out through the tray during the impression.



**4a.7** After impression is complete, use the .050 hex tool to turn the screw counter-clockwise to remove the center pin of the impression post. Remove the tray and impression post as one unit. Send the impression unit to the laboratory.



**4a.8** Place a healing cap or temporary abutment with restoration on the implant while final restoration is being fabricated.

*Products illustrated in this procedure:  
IR3-3508-00 implant, HDT-0050-00 hex driver,  
IPO-0300-00 open tray impression post,  
HCS-0330-00 healing cap*