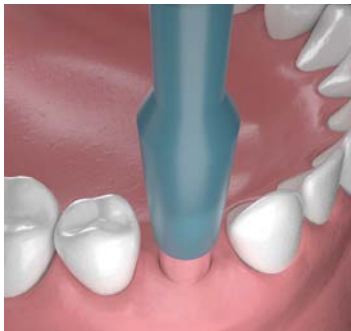
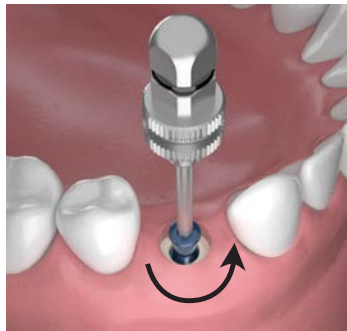


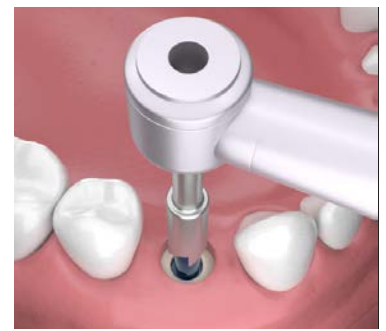
## OPEN TRAY IMPRESSIONS



**1** Remove tissue over the implant using a tissue punch or surgical blade.



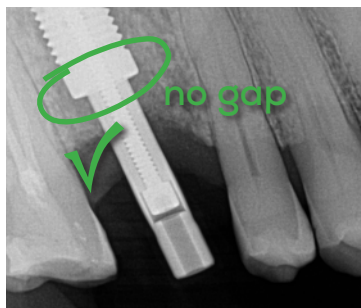
**2** Remove cover screw with the .050 Hex Driver.



**3** Use the Bone Profiler Kit to remove excess bone and tissue that has grown over the top of the implant. See page 40.



**4** Align the appropriate series impression post into the implant. The impression post has a hex on the bottom which will fit into the internal hex in the implant. Finger tighten with .050 hex tool.



**5** X-ray to verify proper seating of the impression post. There should be no gap between the implant and the impression post.

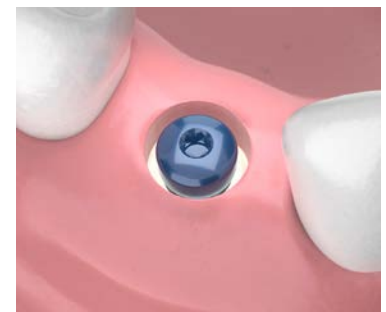
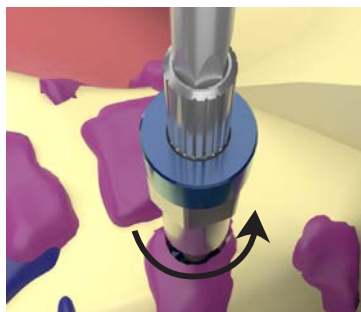


**6** Customize the open tray so the impression post sticks out through the tray during the impression. Take the impression.

**7** After impression is complete, use the .050 hex tool to turn the screw counter-clockwise to remove the center pin of the impression post. Remove the tray and impression post as one unit, and send to the laboratory.



*impression post will be captured in impression*



**8** Place a healing cap or temporary abutment with restoration on the implant while final restoration is being fabricated.