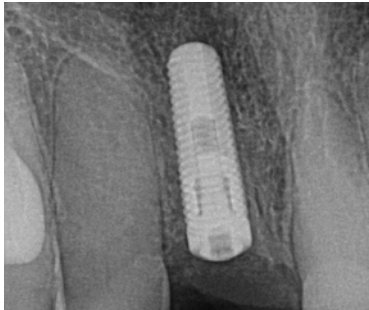
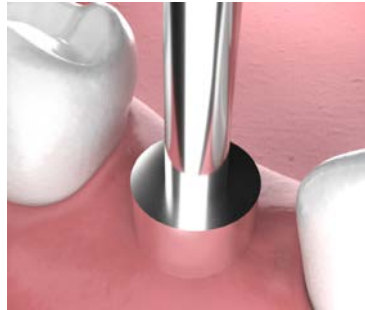




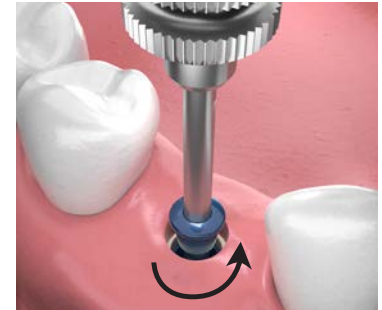
### 5 - PLACEMENT OF HEALING CAP (Healing Abutment, Tissue Former)



**5.1** X-ray to verify implant has appropriate integration.



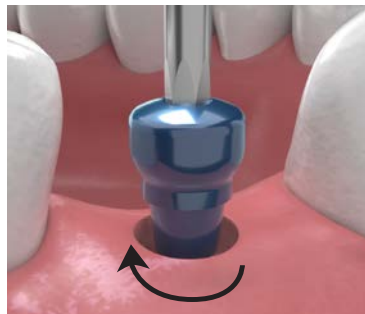
**5.2** Use biopsy punch or surgical blade to expose the cover screw of the implant.



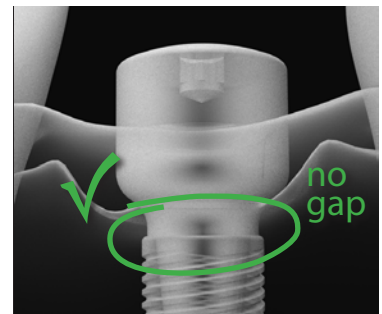
**5.3** Remove cover screw with the .050 hex tool.



**5.4** Use bone profiler if needed. See page 47.

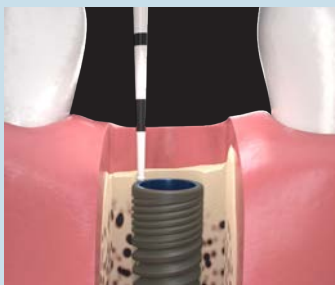


**5.5** Place the appropriate healing cap (see below) to aid in the tissue development and emergence profile for the final restoration. Tighten to 10Ncm or finger tight.

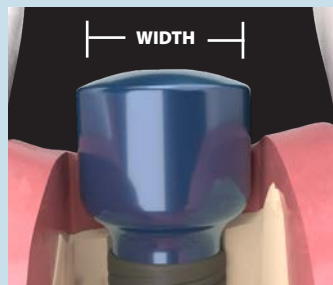


**5.6** X-ray to verify the healing cap is fully seated.

### Determining Appropriate Cuff Height and Width



Cuff height: Measure from the top of the implant to the top of the tissue and add one mm.



Width: Determined by the emergence profile the doctor is trying to develop in the soft tissue.

Molars will have a significantly wider emergence profile than an anterior tooth.

If implant is sub-crestal, use a narrow healing cap as it will not interfere with the adjacent bone when seating.