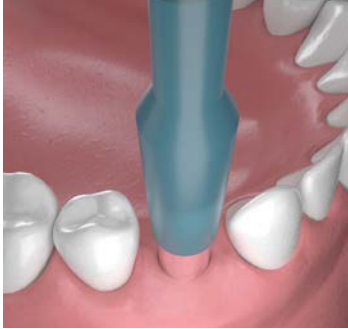
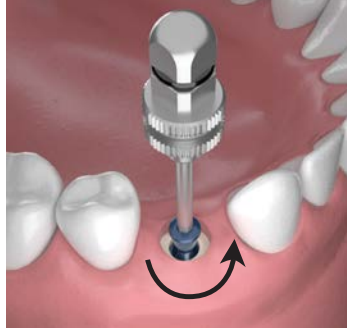


## OPEN TRAY IMPRESSIONS



**1** Remove tissue over the implant using a tissue punch or surgical blade.



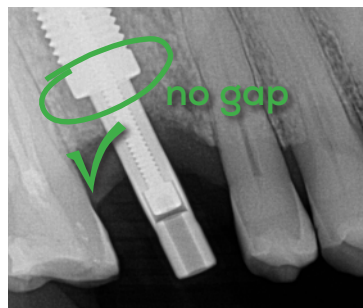
**2** Remove cover screw with the .050 Hex Driver.



**3** Use the Bone Profiler Kit to remove excess bone and tissue that has grown over the top of the implant.



**4** Align the appropriate series impression post into the implant. The impression post has a hex on the bottom which will fit into the internal hex in the implant. Finger tighten with .050 hex tool.



**5** X-ray to verify proper seating of the impression post. There should be no gap between the implant and the impression post.

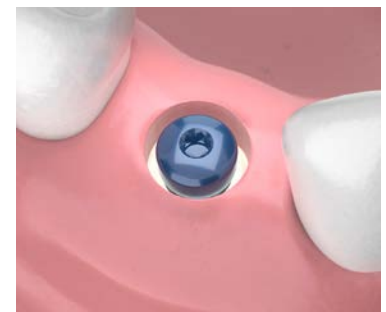
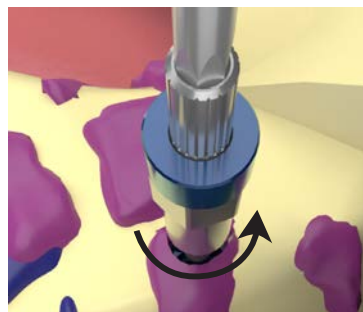


**6** Customize the open tray so the impression post sticks out through the tray during the impression. Take the impression.

**7** After impression is complete, use the .050 hex tool to turn the screw counter-clockwise to remove the center pin of the impression post. Remove the tray and impression post as one unit, and send to the laboratory.



center pin  
impression post will be captured in impression



**8** Place a healing cap or temporary abutment with restoration on the implant while final restoration is being fabricated.

Products illustrated in this procedure: IR3-3508-CL implant, HDT-0050-00 hex driver, IPO-0300-00 open tray impression post, HCS-0330-00 healing cap