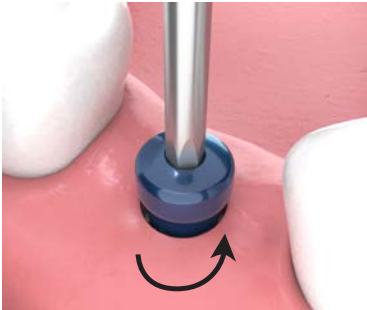
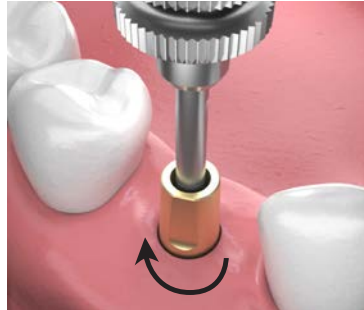


## 6 - PLACEMENT OF ABUTMENT AND CEMENT RETAINED RESTORATION



**6.1** Use an .050 Hex Driver to turn the healing cap counterclockwise and remove it.



**6.2** Insert the final abutment into the implant using the proper orientation. Tighten to finger tight.



**6.3** Try on the final restoration

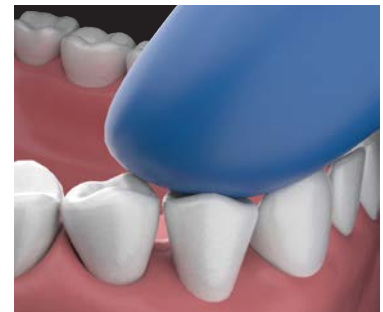


**6.4** Verify proper fit of restoration, proper contacts, proper occlusion. Take an x-ray to verify restoration is fully seated.



**6.5** Remove the restoration and tighten the abutment with a torque wrench.

*Torque specifications:  
300 Series: 20 Ncm  
400 & 500 Series: 30Ncm*



**6.6** Cement the crown over the abutment. Remove excess cement.