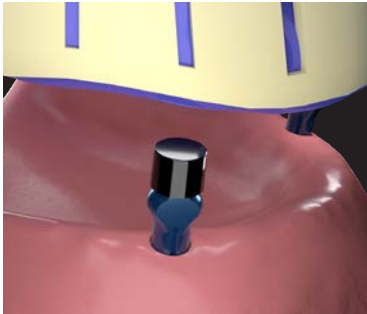


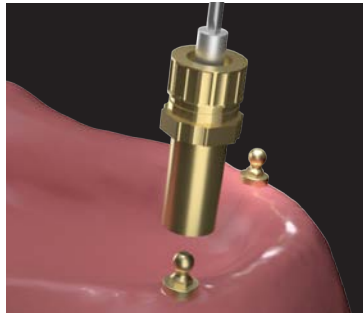


9 - PLACEMENT OF BALL ABUTMENT AND RESTORATION

Ball Abutments are used to secure removable denture prosthetics.

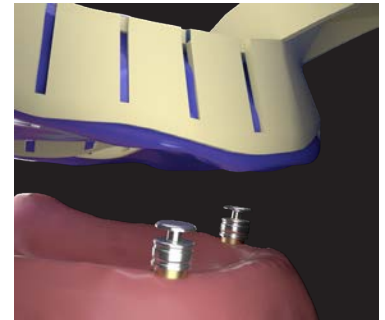


9.1 Take an implant level impression using standard impression posts. Send impression to the laboratory for them to pick the correct ball abutments and make a customized tray.



9.2 APPT 2: When case is returned from the laboratory, remove healing caps, insert abutments, and drive them into the implants using the DEH-0000-00 Ball Abutment Driver and a torque wrench.

*Torque specifications:
300 Series: 20 Ncm
400 & 500 Series: 30 Ncm*



9.3 Take a second impression using a custom tray, with abutments in place and Rhein Impression Transfers over the abutments. Send impression to the laboratory for master cast, base plate and wax rims for jaw relations.

9.4 APPT 3: When case is returned from the laboratory use the base plate and wax rims to register jaw relations. Send to laboratory.



9.5 APPT 4: When case is returned from the laboratory, try in denture setup. Make adjustments as necessary before processing final restoration.

9.6 APPT 5: When final denture is returned insert appliance, adjust occlusion, retention caps and denture base as necessary.

Choosing Cuff Height for Ball Abutments

Measure from the top of the implant to the top of the tissue and add one to two mm.

