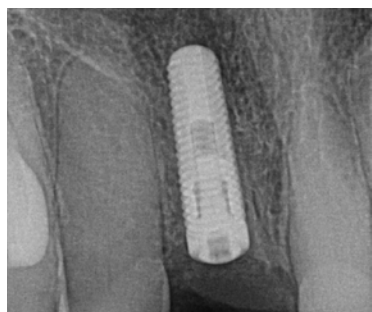


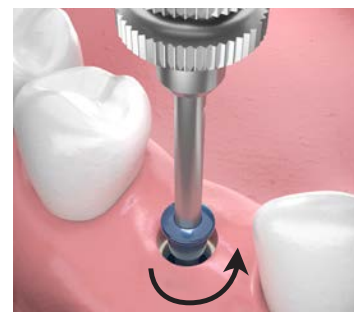
PLACEMENT OF HEALING CAP *(Healing Abutment, Tissue Former)*



1 X-ray to verify implant has appropriate integration.



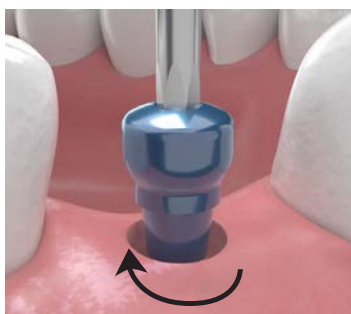
2 Use biopsy punch or surgical blade to expose the cover screw of the implant.



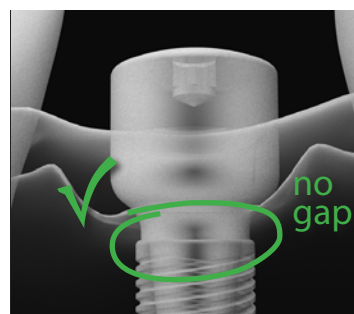
3 Remove cover screw with the .050 hex tool.



4 Use bone profiler if needed.

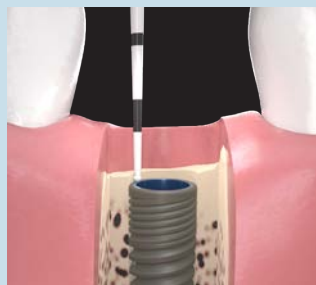


5 Place the appropriate healing cap (see below) to aid in the tissue development and emergence profile for the final restoration. Tighten to 10Ncm or finger tight.

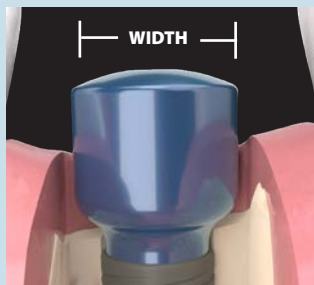


6 X-ray to verify the healing cap is fully seated.

Determining Appropriate Platform Height and Width



Platform height: Measure from the top of the implant to the top of the tissue and add 1 mm.



Width: Determined by the emergence profile the doctor is trying to develop in the soft tissue.

Molars will have a significantly wider emergence profile than an anterior tooth.

If implant is sub-crestal, use a narrow healing cap as it will not interfere with the adjacent bone when seating.