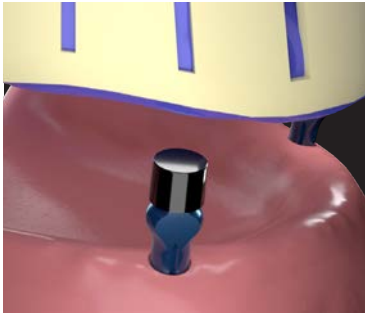


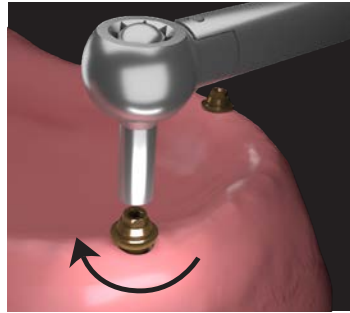
## PLACEMENT OF MULTI-UNIT ABUTMENT *(MUA, transmucosal)*

Multi-unit Abutments are used to secure multi-unit screw-retained prosthetics in one of the following case types:

1. Attaching Zirconia hybrid prosthetics.
2. Retrofitting a pre-made denture following immediate placement and immediate load of a temporary/healing prosthesis. These healing appliances and attachments are generally replaced with the final prosthesis following implant integration.
3. Attaching a milled or cast titanium bar which supports a denture type restoration attached to the metal substructure.

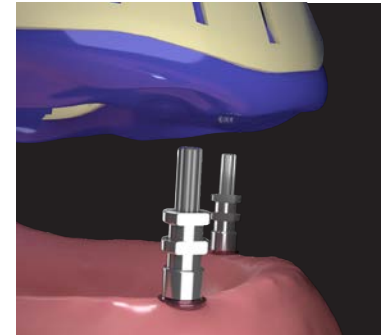


**1** Take an implant level impression using standard impression posts. Send impression to the laboratory for them to pick the correct Multi-unit Abutments and make a customized open tray.



**2** APPT 2: When case is returned from the laboratory, remove healing caps, insert abutments, and drive them into the implants using the DEH-0910-32 Abutment Driver and a torque wrench.

*Torque specifications: 300  
Series: 20 Ncm, 400 & 500  
Series: 30Ncm*



**3** Using the custom tray, take a second impression with the MUA-0345-IP Impression Copings over the abutments. Send impression to the laboratory for master cast, base plate and wax rims for jaw relations.

**4** APPT 3: When case is returned from the laboratory use the base plate and wax rims to register jaw relations. Send to laboratory.



**5** APPT 4: When case is returned from the laboratory, try in the polymethylmethacrylate (PMMA) setup. Make adjustments as necessary during the temporary period (6 weeks recommended).

After the adjustments have been made and appliance is satisfactory, remove appliance and return to laboratory for scan of the modified appliance and creation of new final appliance.



**6** APPT 5: When final appliance is returned, insert prosthesis and tighten sleeve screws to 20 Ncm.