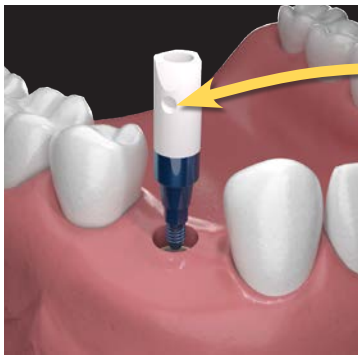
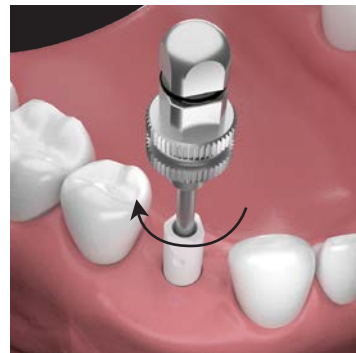


IMPLANT ONE SCAN BODY PROCEDURE

The Implant One Scan Body is designed with specialized geometry that helps CAD software pinpoint the exact location of an Implant One implant, its timing, and its relationship to the arch form. Follow the steps below to ensure the most accurate scans for your patients' restorations.



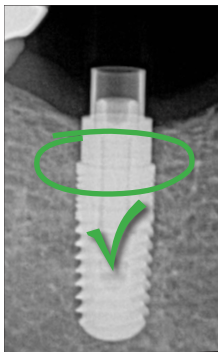
IMPORTANT:
The dimple must
face the buccal
or the facial in
order to get an
acceptable scan.



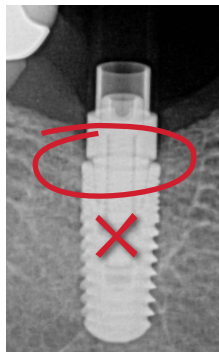
1 Place the scan body into the implant or analog. The scan body's series and the implant's series must match, e.g., 300 Series to 300 Series.

2 Finger tighten the abutment screw with an Implant One tapered .050" hex driver.

SEATED



NOT-SEATED



3 Take an X-ray to confirm proper seating of the scan body (intraoral only). There should be no gap between the implant and the scan body.



4 Take the optical scan with the scan body properly installed.

Products illustrated in this procedure: ASC-0300-00 300 Series Scan Body, HDT-0050-S0 tapered hex driver