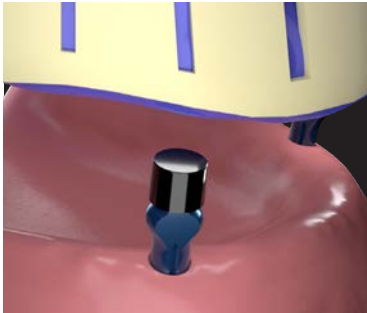
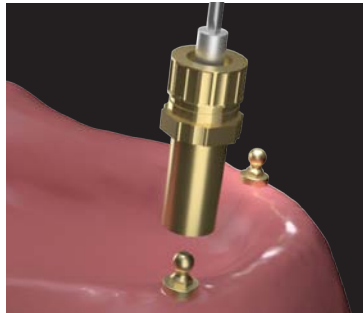


## PLACEMENT OF BALL ABUTMENT AND RESTORATION

Ball Abutments are used to secure removable denture prosthetics.

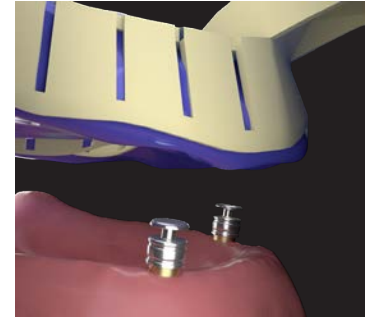


**1** Take an implant level impression using standard impression posts. Send impression to the laboratory for them to pick the correct ball abutments and make a customized tray.



**2** APPT 2: When case is returned from the laboratory, remove healing caps, insert abutments, and drive them into the implants using the DEH-0000-00 Ball Abutment Driver and a torque wrench.

*Torque specifications:*  
300 Series: 20 Ncm  
400 & 500 Series: 30Ncm



**3** Take a second impression using a custom tray, with abutments in place and Rhein Impression Transfers over the abutments. Send impression to the laboratory for master cast, base plate and wax rims for jaw relations.

**4** APPT 3: When case is returned from the laboratory use the base plate and wax rims to register jaw relations. Send to laboratory.



**5** APPT 4: When case is returned from the laboratory, try in denture setup. Make adjustments as necessary before processing final restoration.

**6** APPT 5: When final denture is returned insert appliance, adjust occlusion, retention caps and denture base as necessary.

### PLACEMENT OF RHEIN83 RETENTIVE CAPS

In a prosthesis with metal housings, remove caps using a rotary tool at a low RPM, or the Rhein83 cap removal tool. For all others, use a pointed instrument, such as a spatula, or the Rhein83 cap extractor tool.

Insert the new caps with the Rhein83 cap insertion tool. Green caps inserted in metal housings should have a drop of cyanoacrylic adhesive applied to the inside of the housing before insertion.

#### RHEIN83 RETENTIVE CAPS

Cap Color Name		Retention
Clear		Standard
Pink		Soft
Yellow (Standard and Undersized Internal Diameter)		Extra Soft
Green		Very Elastic
Extra Resilient Gold		Slightly Elastic
Extra Resilient Silver		Elastic
Titan		Standard
Gray		Rigid

#### Choosing Platform Height for Ball Abutments

Measure from the top of the implant to the top of the tissue and add 1 to 2 mm.



Products illustrated in this procedure: IPC-0300-00 closed tray impression post, DEH-0000-00 Ball Abutment Driver, Rhein Impression Transfer - 044CAIN