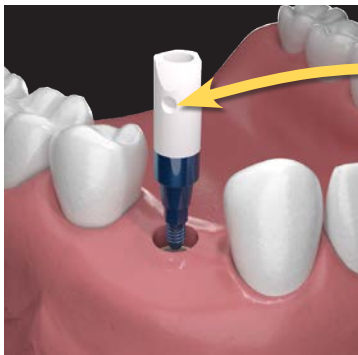
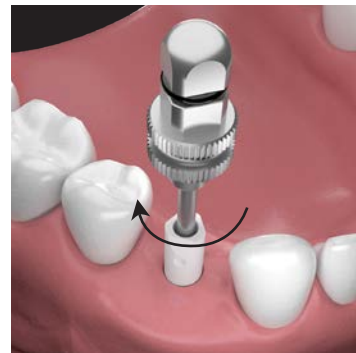


## IMPLANT ONE SCAN BODY PROCEDURE

The Implant One Scan Body is designed with specialized geometry that helps CAD software pinpoint the exact location of an Implant One implant, its timing, and its relationship to the arch form. Follow the steps below to ensure the most accurate scans for your patients' restorations.



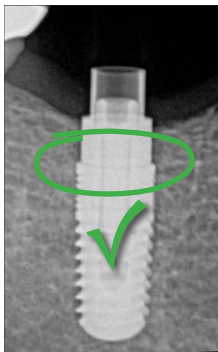
**IMPORTANT:**  
The dimple must face the buccal or the facial in order to get an acceptable scan.



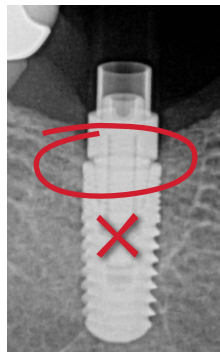
**1** Place the scan body into the implant or analog. The scan body's series and the implant's series must match, e.g., 300 Series to 300 Series.

**2** Finger tighten the abutment screw with an Implant One tapered .050" hex driver.

**SEATED**



**NOT-SEATED**



**3** Take an X-ray to confirm proper seating of the scan body (intraoral only). There should be no gap between the implant and the scan body.



**4** Take the optical scan with the scan body properly installed.