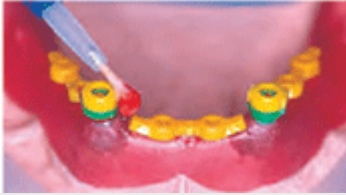




## IMPLANT-ONE / SPHERO BLOCK - LABORATORY PROCEDURE

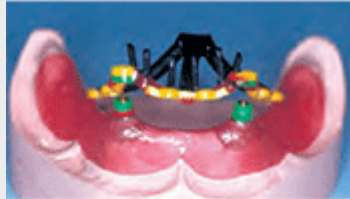
### Acrylic Prosthesis With Cast Reinforcement Using Directional Rings

Figure 1



Place the directional rings over the spheres. OT Box is placed over the directional rings, ensuring that the horizontal plane is level. Connect with resin.

Figure 2



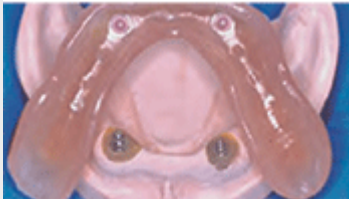
The constructed OT Box substructure with reinforced wax pins. Sprued and ready for casting.

Figure 3



The cast substructure on the model. The metal reinforcement pins for each tooth are positioned according to the silicone mask.

Figure 4



Finished prosthesis with caps inserted into the cast OT Box housings.

Figure 5



Screw the abutment into the analog. Be sure to use the abutment with the proper cuff height.

Figure 6



Directional rings are placed over the abutments and must be fully seated on the platform. Rotate rings until they are parallel in the same horizontal plane.



**Figure 7**



The nylon caps are inserted into the stainless steel housings and placed on top of the directional rings. Verify that the caps are still in the same horizontal plane.

**Figure 8**



The finished prosthesis with stainless steel housings and retentive caps in final position.